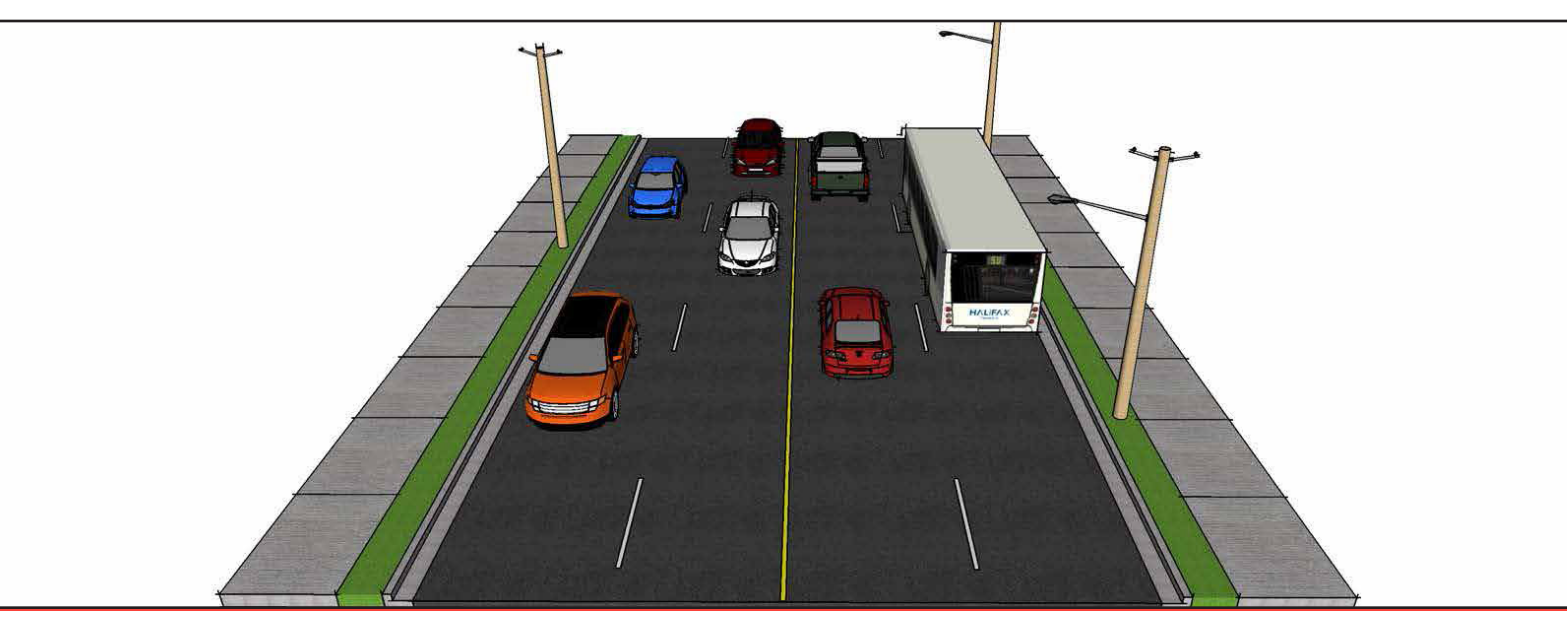
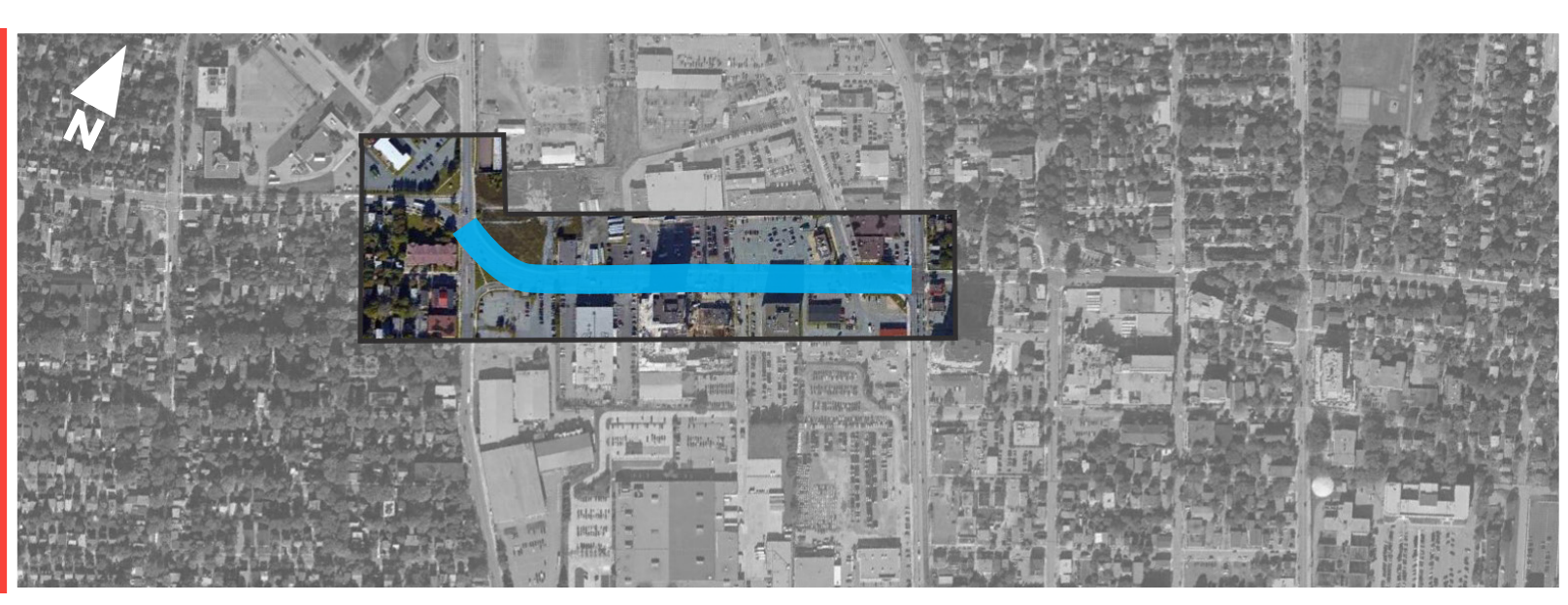


# YOUNG STREET - WINDSOR STREET TO ROBIE STREET

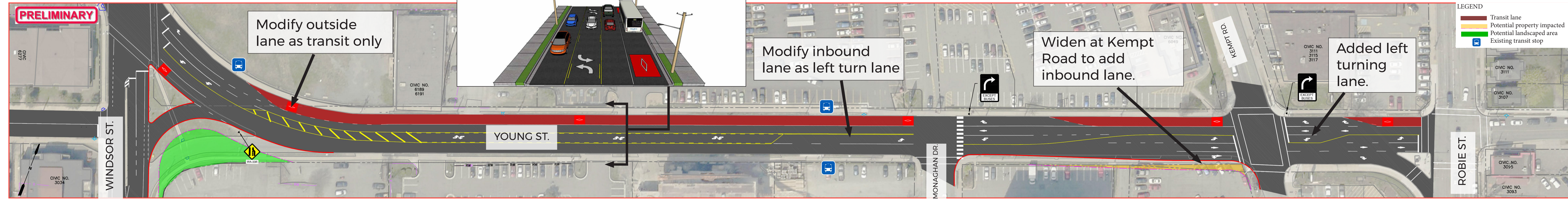
Existing Cross Section



Key Map - Young Street



**LOW INVESTMENT:**  
OUTBOUND TRANSIT LANE

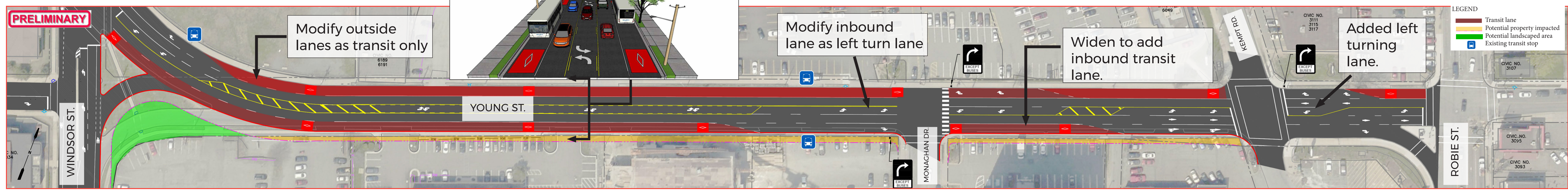


IMPACTS	Provides curbside transit lanes in westbound direction.	Longer pedestrian crossing at Kempt Road and Windsor Street.	No impact.
	Fewer through lanes increase vehicle queues Additional left turn lanes at driveways	Slight widening at Kempt Road intersection may impact adjacent property	No impact.

- PROS**
- Improves flow of transit vehicles in westbound direction.
  - Reduces potential for rear end conflicts with added left turn lanes at driveways.

- CONS**
- Road widening may impact adjacent property.
  - Longer pedestrian crossings at Kempt Road.

**MEDIUM INVESTMENT:**  
INBOUND AND OUTBOUND TRANSIT LANE

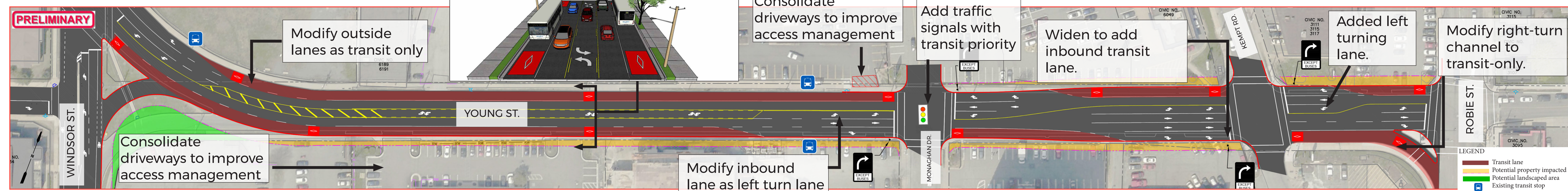


IMPACTS	Provides curbside transit lanes in both directions.	Longer pedestrian crossings at Monaghan Drive, Kempt Road, and Windsor Street.	No impact.
	Fewer through lanes increase vehicle queues. Additional left turn lanes at driveways.	Widening may impact properties along the corridor	No impact.

- PROS**
- Improves flow of transit vehicles in both directions.
  - Reduces potential for rear end conflicts with added left turn lanes.

- CONS**
- Road widening may impact adjacent properties.
  - Longer pedestrian crossings at Monaghan Drive, Kempt Road, and Windsor Street.

**HIGH INVESTMENT:**  
OUTBOUND AND EXTENDED INBOUND TRANSIT



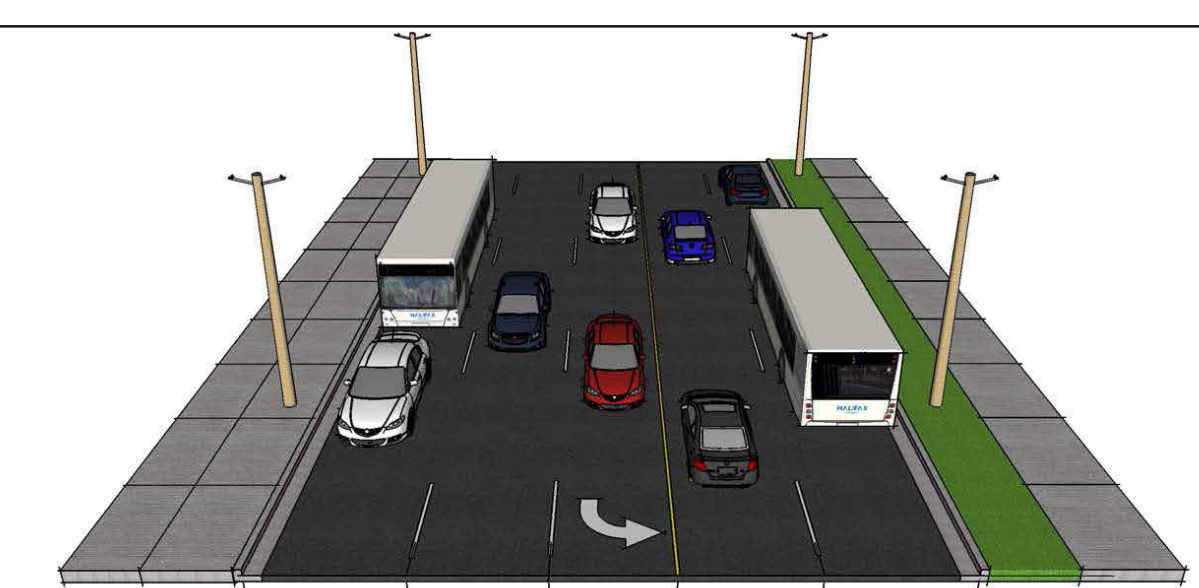
IMPACTS	Provides curbside transit lanes in both directions.	Longer pedestrian crossings. Signalized pedestrian crossing added at Monaghan Drive.	No impact.
	Fewer through lanes increase vehicle queues. Improved driveway access management.	Widening may impact properties along the corridor. Access modifications impact adjacent properties.	Impacts 3 large trees.

- PROS**
- Improves flow of transit vehicles in both directions.
  - Access management improvements reduce conflict points.
  - Reduces potential for rear end conflicts with added left turn lanes at driveways.
  - Improves access to Robie Street (southbound) for transit vehicles.

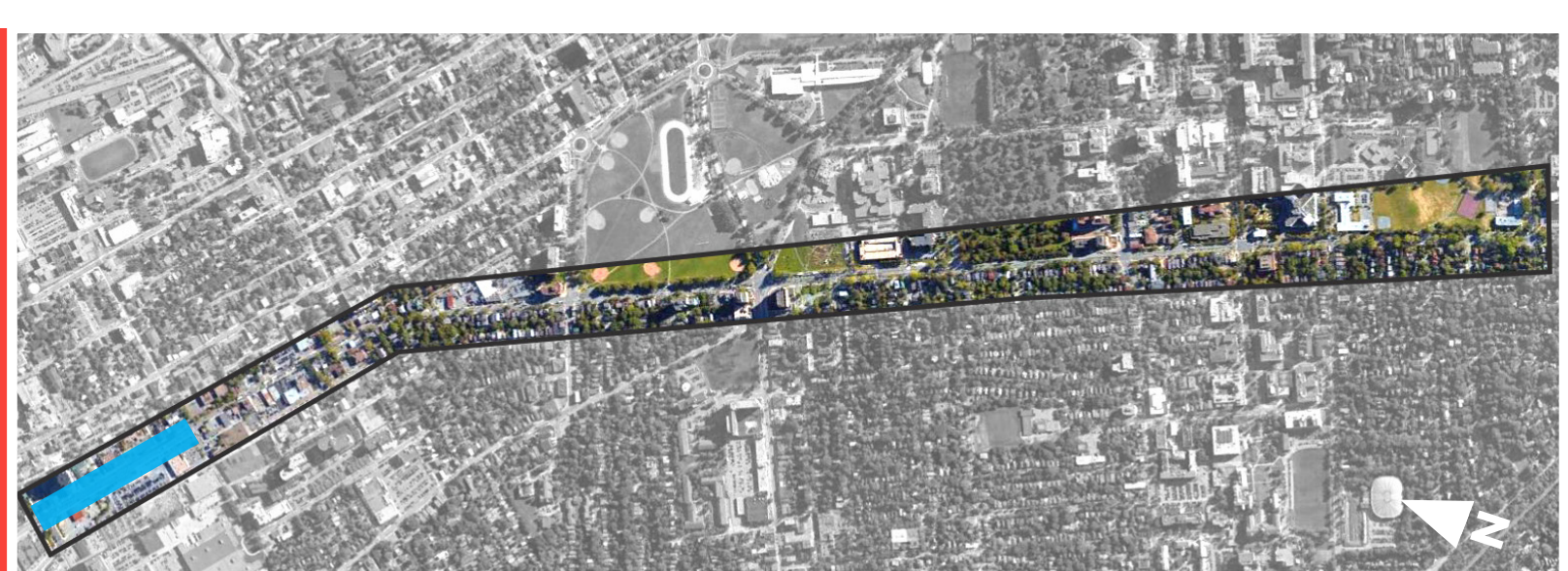
- CONS**
- Road widening may impact adjacent properties.
  - Longer pedestrian crossings at Monaghan Drive, Kempt Road, and Robie Street.

# ROBIE STREET - YOUNG STREET TO ALMON STREET

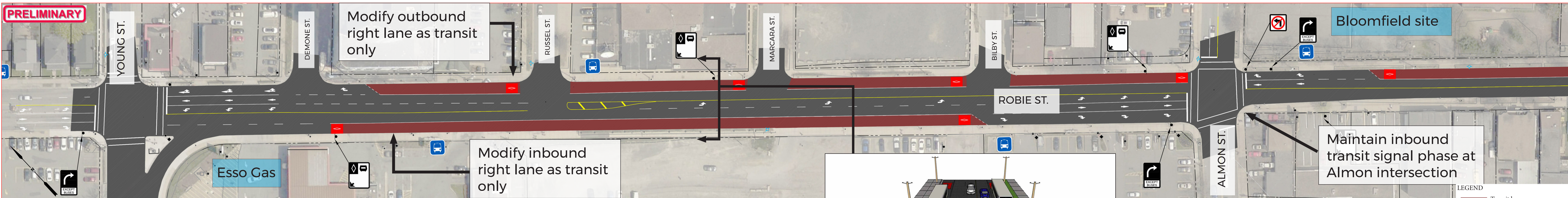
Existing Cross Section



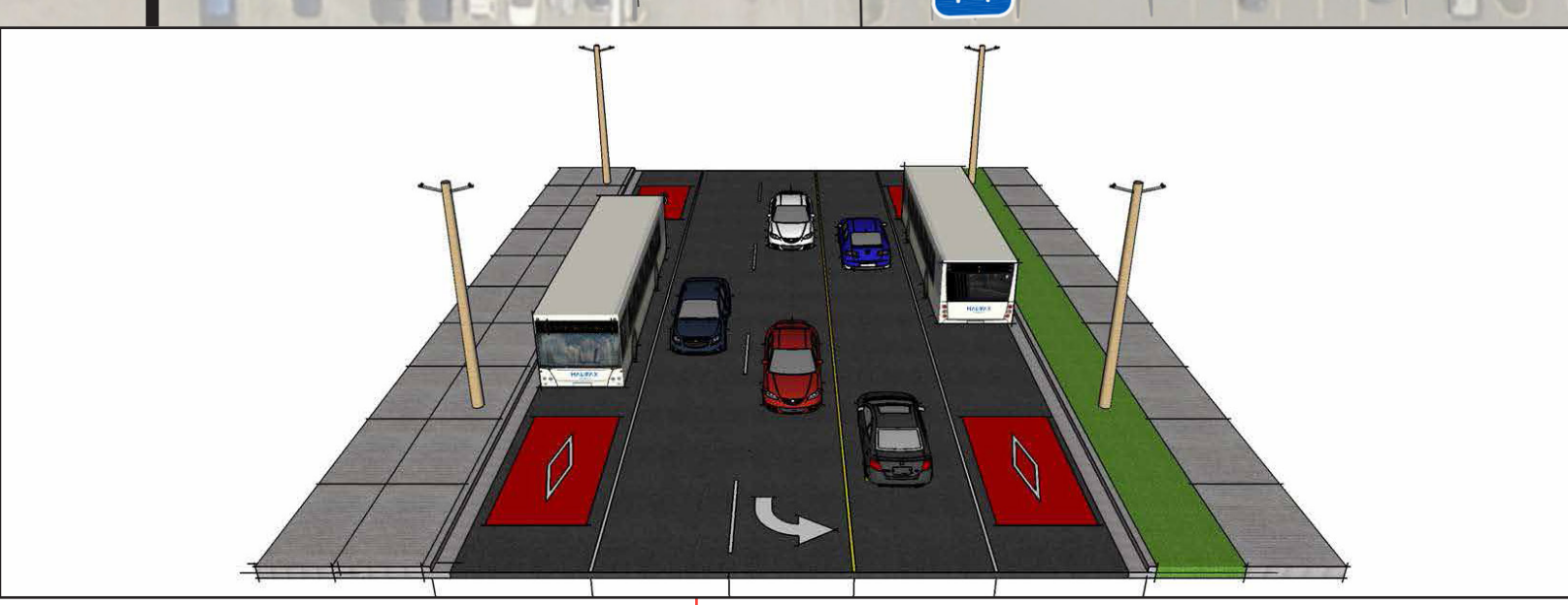
Key Map - Robie Street



## CURBSIDE BUS LANES: BOTH DIRECTIONS (NORTH OF ALMON ST.)



<b>IMPACTS</b> Provides curbside transit lanes in both directions. Minimal impact to traffic.	No impact.	Loss of parking south of Almon St.
	No major impact.	No impact.



### PROS

- Improves flow of transit vehicles in both directions (north of Almon Street).
- Provides continuous northbound transit lane (south of Demone Street).

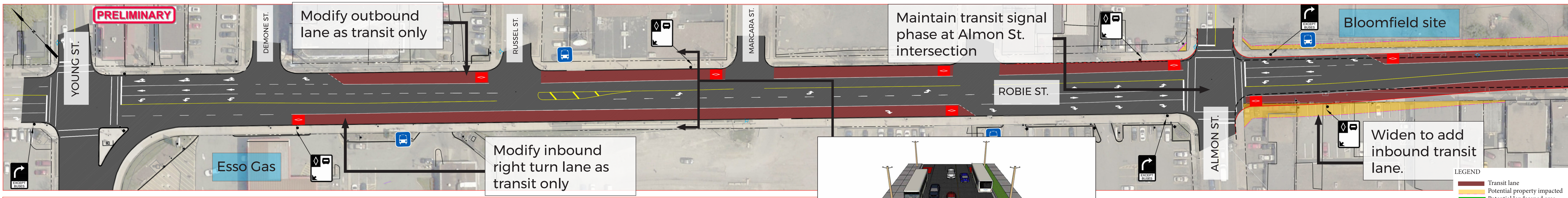
### CONS

- Fewer travel lanes for non-transit traffic will increase queuing on Robie Street.
- Require merging by northbound left-turning transit vehicles to Young Street.

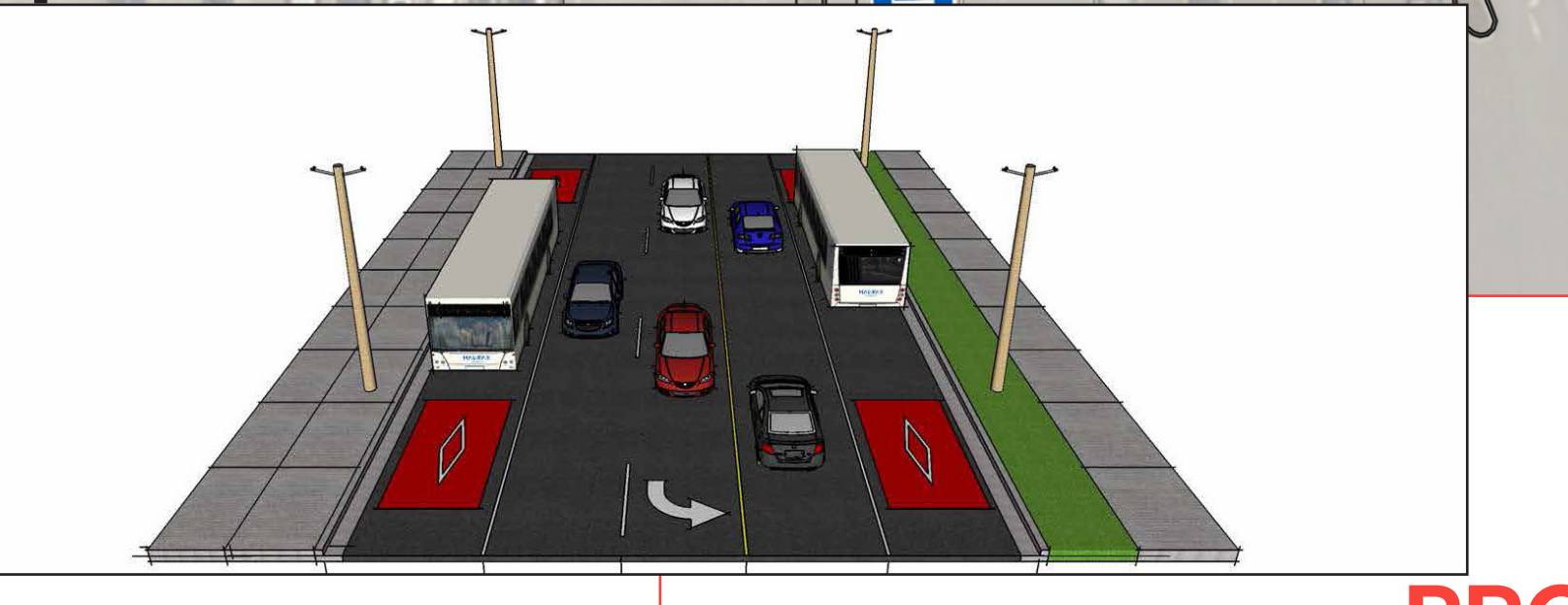
**LEGEND**

- Transit lane
- Potential property impacted
- Potential landscaped area
- Existing transit stop

## CURBSIDE BUS LANES: BOTH DIRECTIONS



<b>IMPACTS</b> Provides curbside transit lanes in both directions. Minimal impact to traffic.	No impact.	Loss of parking south of Almon St.
	No impact north of Almon St. Some impact south of Almon St.	No impact north of Almon St. See next board for impacts south of Almon St.



### PROS

- Improves flow of transit vehicles in both directions.
- Northbound transit lane provided but ends before Young Street.

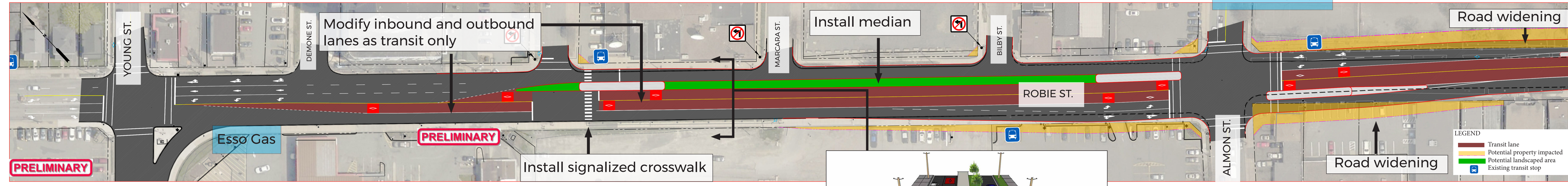
### CONS

- Fewer travel lanes for non-transit traffic will increase queuing on Robie Street.
- Requires merging by northbound left-turning transit vehicles to Young Street.

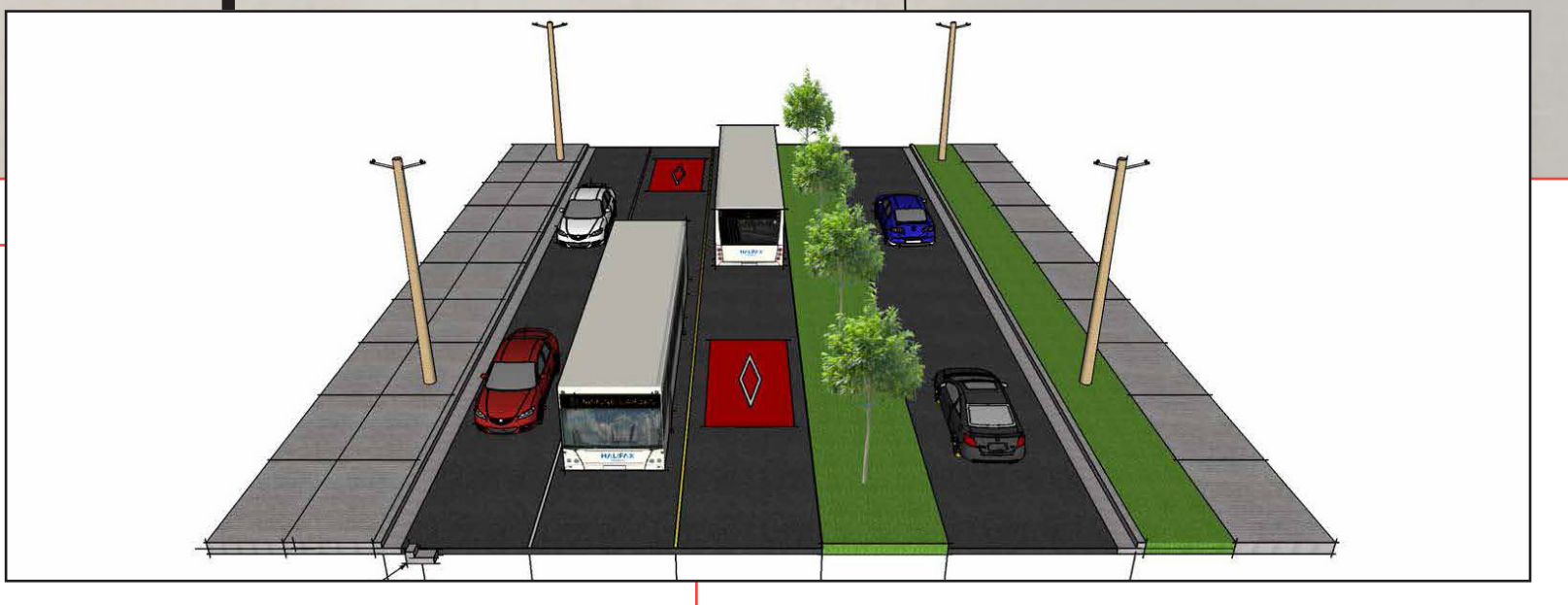
**LEGEND**

- Transit lane
- Potential property impacted
- Potential landscaped area
- Existing transit stop

## CENTRE MEDIAN BUS LANES



<b>IMPACTS</b> Provides centre median transit lanes in both directions. Longer and additional alternative routing for local traffic with elimination of many left turns.	Longer pedestrian crossings at Almon Street.	Loss of parking south of Almon St.
	Impacts to properties near Almon Street.	No impact north of Almon St. See next board for impacts south of Almon St.



### PROS

- Improves flow of transit vehicles in both directions.
- Better aligns northbound buses to turn left onto Young Street.

### CONS

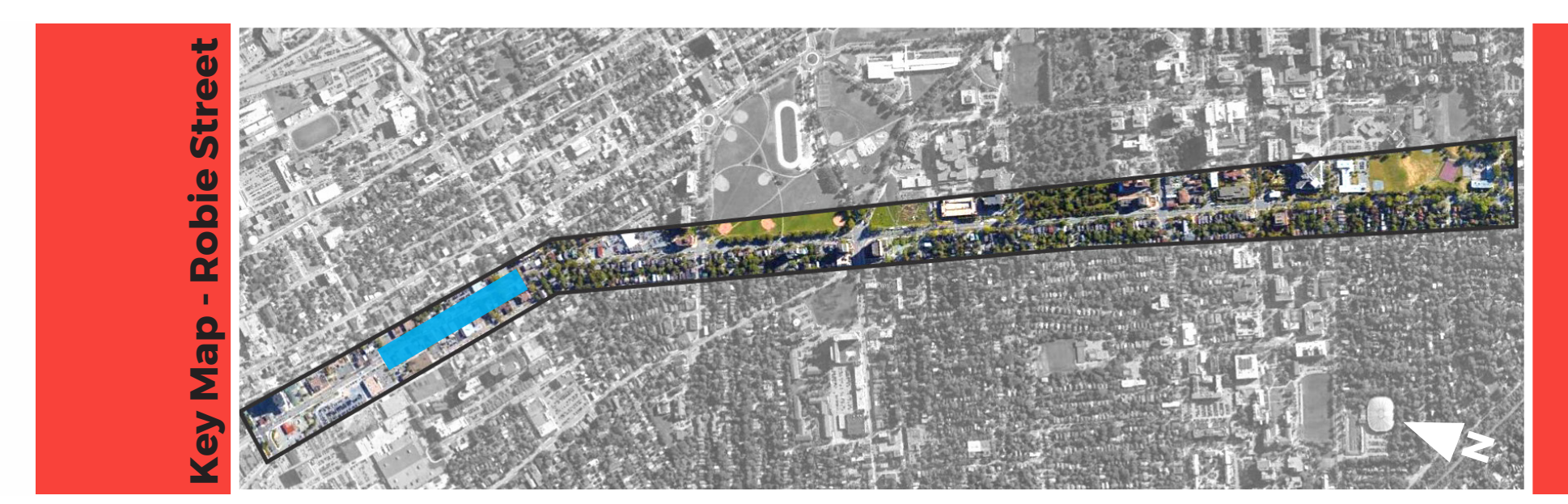
- Added delay at signalized intersections for all users.
- Fewer travel lanes for non-transit traffic on Robie Street.
- Restricts mid-block left turn movements. Turn restrictions could increase routing for local traffic.

**LEGEND**

- Transit lane
- Potential property impacted
- Potential landscaped area
- Existing transit stop

# ROBIE STREET - ALMON STREET TO WILLOW STREET

Existing Cross Section



**CURBSIDE BUS LANES: NORTHBOUND ONLY**



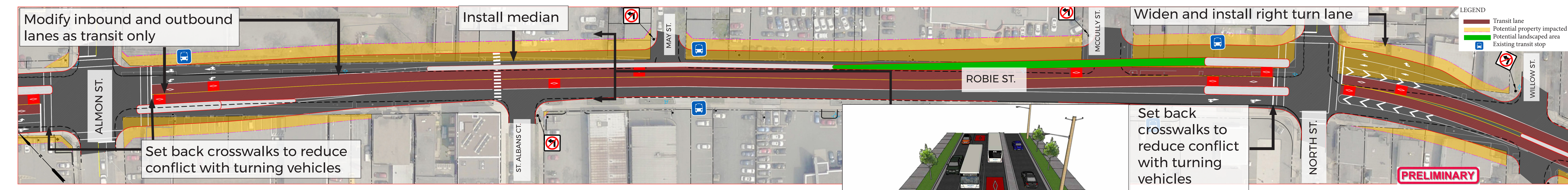
<b>IMPACTS</b>	Provides curbside transit lanes in northbound direction.	Longer pedestrian crossings at North Street.	Loss of on-street parking.	<b>PROS</b>	<ul style="list-style-type: none"> <li>Improves flow of transit vehicles in northbound direction.</li> </ul>	<b>CONS</b>	<ul style="list-style-type: none"> <li>No southbound transit priority.</li> <li>Restricts northbound left turns to Almon Street.</li> <li>Loss of on-street parking.</li> <li>Road widening will impact adjacent properties and tree at North Street.</li> </ul>
	Restricted northbound left at Almon Street will divert additional traffic to Young Street	Road widening may impact properties at North Street intersection.	Road widening will impact one large tree.				

**CURBSIDE BUS LANES: BOTH DIRECTIONS**



<b>IMPACTS</b>	Provides curbside transit lanes in both directions.	Longer pedestrian crossings.	Loss of on-street parking.	<b>PROS</b>	<ul style="list-style-type: none"> <li>Improves flow of transit vehicles in both directions.</li> <li>Provides left-turn traffic lane (northbound) on to Almon Street.</li> </ul>	<b>CONS</b>	<ul style="list-style-type: none"> <li>Longer pedestrian crossings.</li> <li>Road widening will impact adjacent properties and street trees.</li> <li>Loss of on-street parking.</li> </ul>
	Added left turn lane at Almon Street going northbound.	Road widening may impact several properties along the corridor.	Road widening will impact 4 large trees, 3 medium trees				

**CENTRE MEDIAN BUS LANES**



<b>IMPACTS</b>	Provides centre median transit lanes in both directions.	Longer pedestrian crossings at all crossings.	Loss of on-street parking.	<b>PROS</b>	<ul style="list-style-type: none"> <li>Improves flow of transit vehicles in both directions.</li> <li>Provides left-turn traffic lane (northbound) on to Almon Street.</li> </ul>	<b>CONS</b>	<ul style="list-style-type: none"> <li>Added delay at signalized intersections for all users.</li> <li>Road widening will impact adjacent properties and street trees.</li> <li>Loss of on-street parking.</li> <li>Restricts mid-block left turn movements. Turn restrictions could increase routing for local traffic.</li> </ul>
	Required traffic signal phasing for left turns will delay through-traffic. Longer routing for local traffic with elimination of many left turns	Widening may impact several properties along the corridor.	Road widening will impact 4 large trees, 3 medium trees.				

# ROBIE STREET - WILLOW STREET TO COMPTON AVENUE

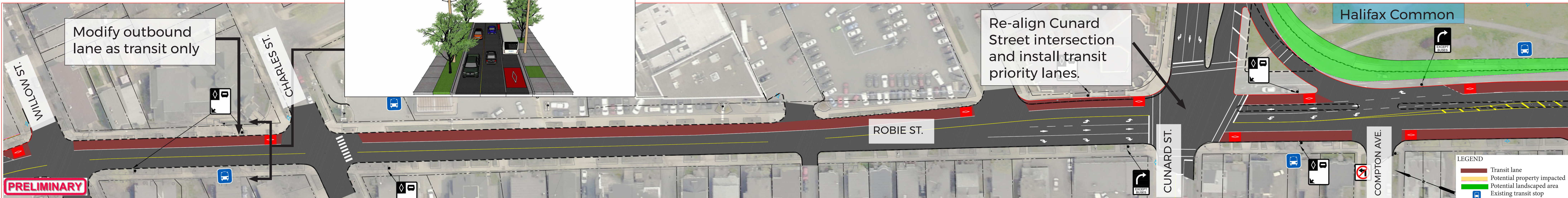
Existing Cross Section



Key Map - Robie Street



## CURBSIDE BUS LANES: NORTHBOUND ONLY



<b>IMPACTS</b>	Provides curbside transit lanes in northbound direction.	Loss of median refuge at Cunard Street. Shorter crossing at Cunard Street.	No impact.
	Loss of northbound traffic lane.	No major impact.	No impact

- PROS**
- Improves flow of transit vehicles in northbound direction.
  - Significant improvements to alignment at Cunard / Robie intersection.

- CONS**
- No southbound transit priority.
  - May impact flow of traffic (northbound) during peak periods.

## CURBSIDE BUS LANES: BOTH DIRECTIONS

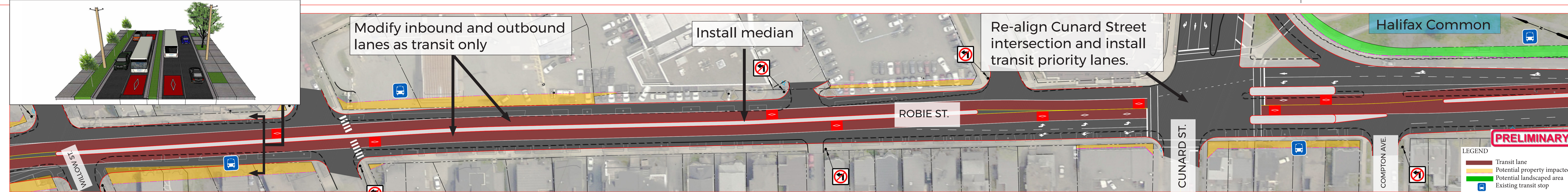


<b>IMPACTS</b>	Provides curbside transit lanes in both directions.	Longer pedestrian crossings. Shorter crossing at Cunard.	No impact.
	Loss of right-turn lane. Loss of northbound traffic lane. Improved alignment at Cunard Street intersection	Widening may impact properties along the corridor. Halifax Common green space gained.	Road widening will impact 8 large trees, 1 medium tree.

- PROS**
- Improves flow of transit vehicles in both directions.
  - Significant improvements to alignment at Cunard / Robie intersection.
  - Gains to Halifax Common land at southeast corner of Cunard Street intersection.

- CONS**
- Longer pedestrian crossings.
  - Road widening will impact adjacent properties and trees.
  - May impact flow of traffic (northbound) during peak periods.

## CENTRE MEDIAN BUS LANES



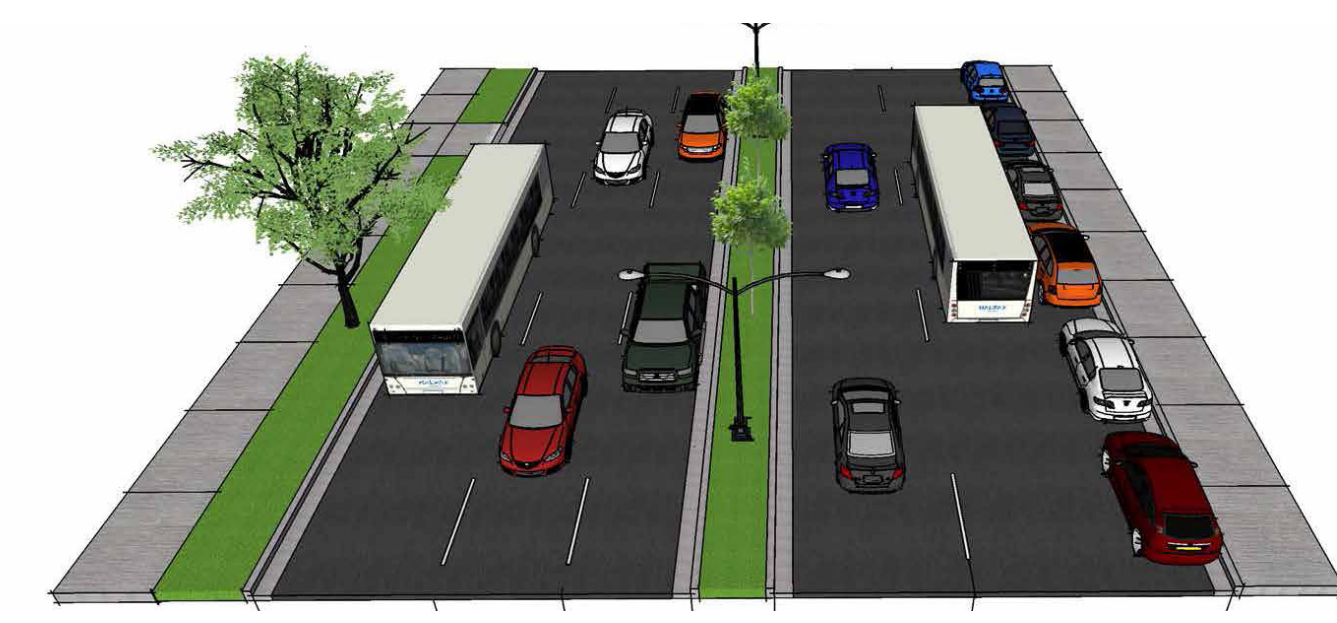
<b>IMPACTS</b>	Provides centre median transit lanes in both directions.	Longer pedestrian crossings of Robie at Almon Street.	No impact.
	Traffic signal phasing will increase intersection delay. Left turns to/from unsignalized side streets prohibited.	Widening may impact several properties along the corridor.	Road widening will impact 8 large trees, 1 medium tree.

- PROS**
- Improves flow of transit vehicles in both directions.
  - Improvements to alignment at Cunard / Robie intersection.
  - Gains to Halifax Common land at southeast corner of Cunard Street intersection.
  - Aligns buses for left turns to Cunard Street.

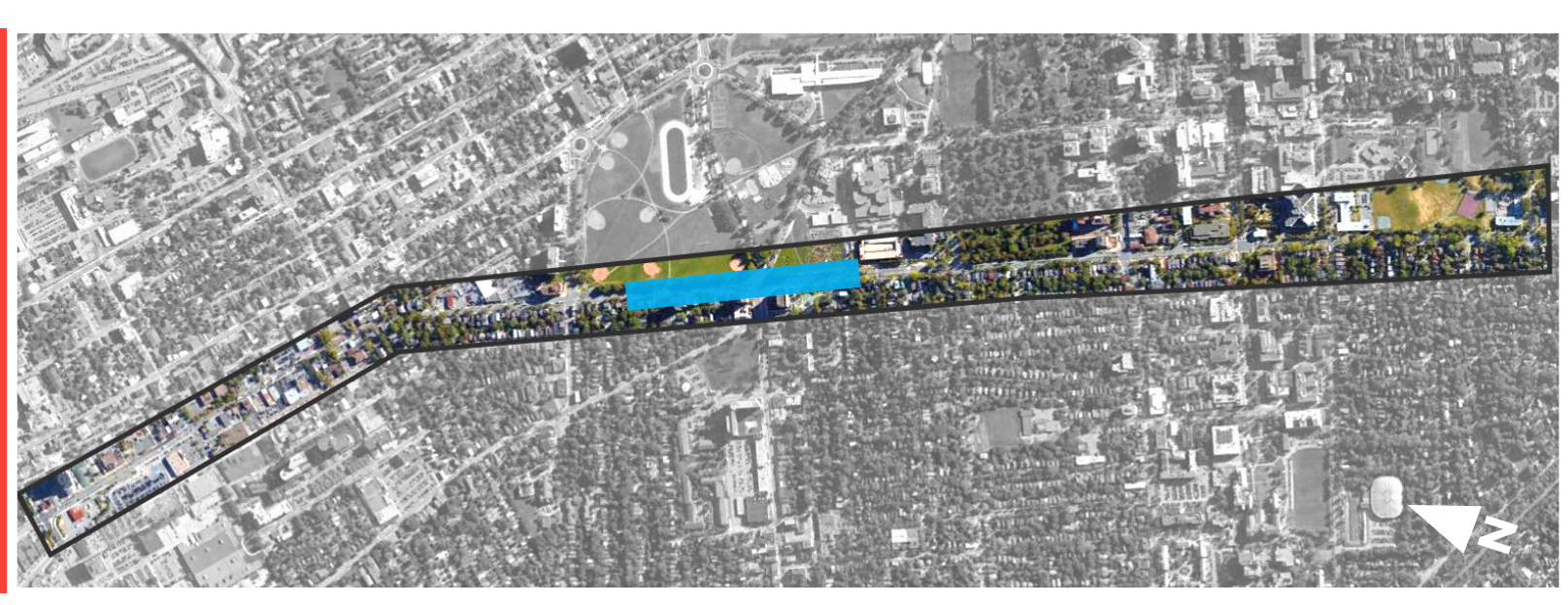
- CONS**
- Added delay at signalized intersections for all users.
  - Road widening will impact adjacent trees and properties
  - May impact flow of traffic (northbound) during peak periods.
  - Restricts mid-block left turn movements. Turn restrictions could increase routing for local traffic.

# ROBIE STREET - WILLIAMS STREET TO SHIRLEY STREET

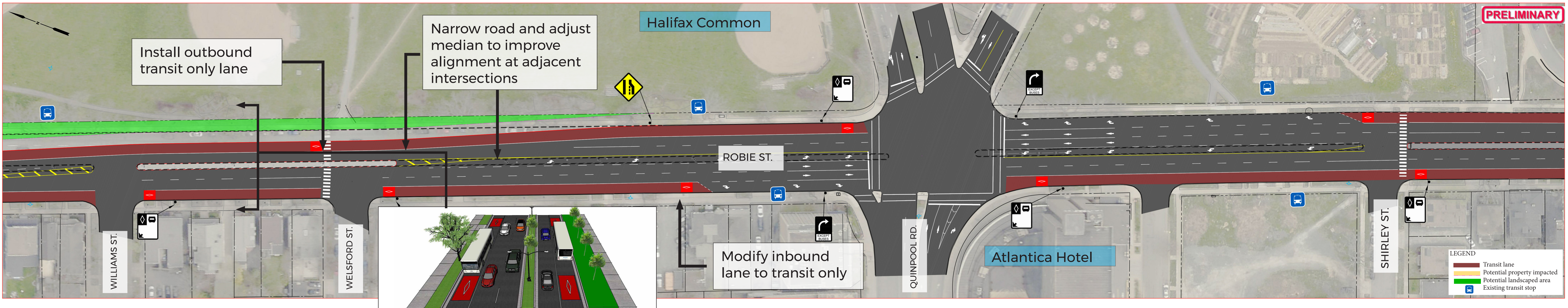
Existing Cross Section



Key Map - Robie Street



CURBSIDE BUS LANES



IMPACTS

Provides curbside transit lanes in both directions.	Shorter pedestrian crossings at Welsford Street. Elimination of median refuge at Quinpool intersection.	Loss of on-street parking.
Fewer through lanes in both directions.	Halifax Common greenspace gained.	Small trees will be lost with the removal of the median. Road narrowing will provide additional greenspace around the Common.

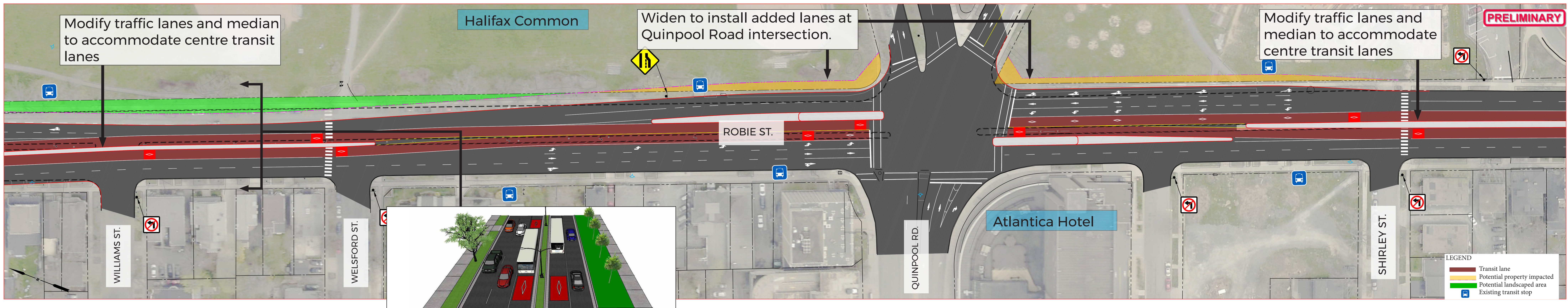
PROS

- Improves flow of transit vehicles in both directions.
- Road narrowing will provide additional greenspace at the Halifax Common.
- Shorter pedestrian crossing at Welsford Avenue.
- Improved northbound alignment at Quinpool Road intersection

CONS

- Loss of on-street parking along Robie Street.
- Loss of median refuge at Quinpool Rd. intersection.

CENTRE MEDIAN BUS LANES



IMPACTS

Provides centre median transit lanes in both directions.	Shorter pedestrian crossings at Welsford Avenue. Longer pedestrian crossings at Quinpool Road intersection.	Loss of on-street parking.
Traffic signal phasing will increase intersection delay. Left turns to/from unsignalized side streets prohibited.	Halifax Common greenspace gained. Impact on Common property near Cogswell Street.	Road widening will impact 10 large trees. Small trees will be relocated with changes to the median.

PROS

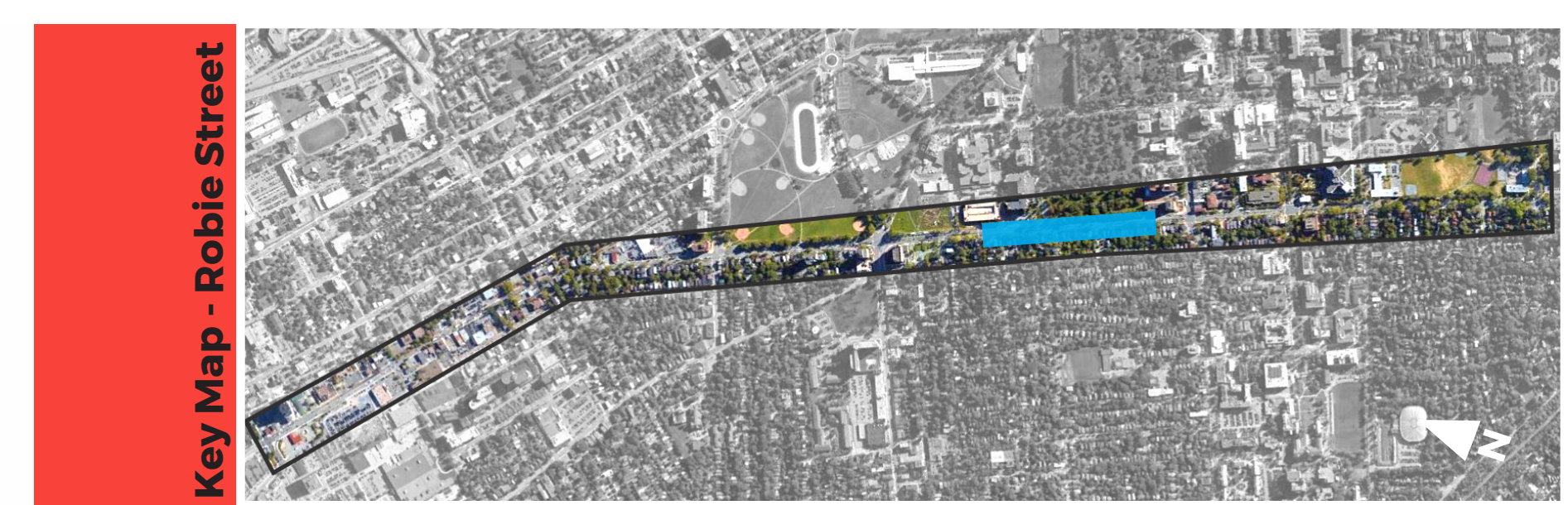
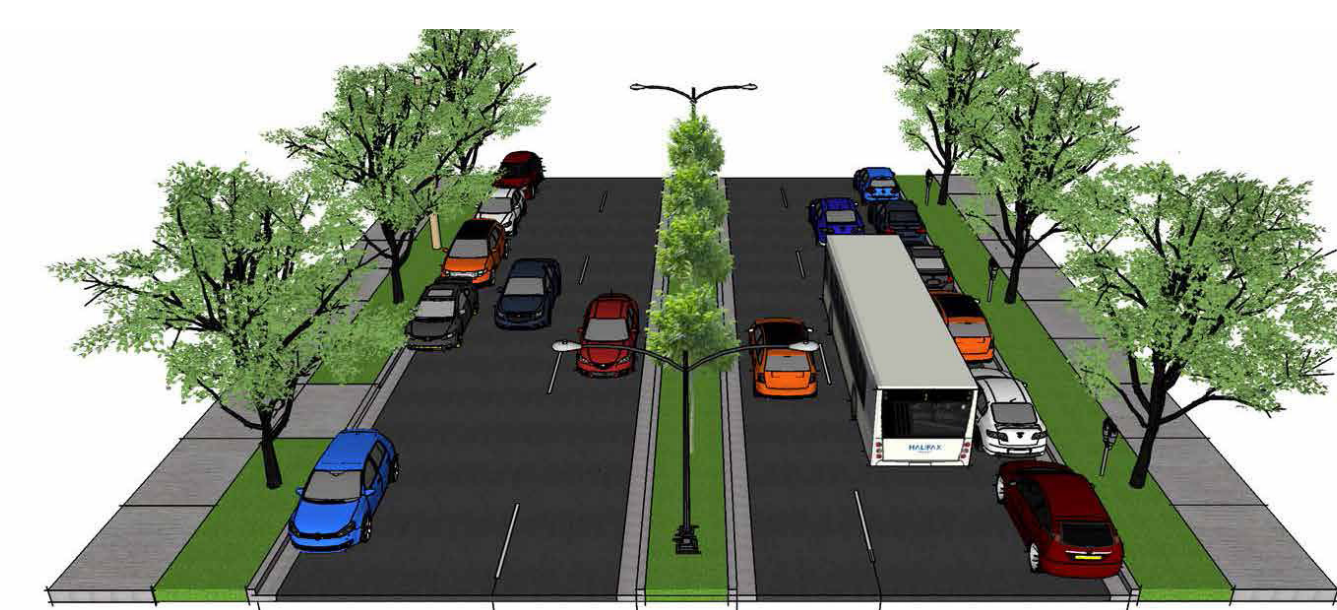
- Improves flow of transit vehicles in both directions.
- Road narrowing will provide additional greenspace at the Halifax Common.
- Shorter pedestrian crossing at Welsford.
- Improved alignment at Quinpool Road intersection.

CONS

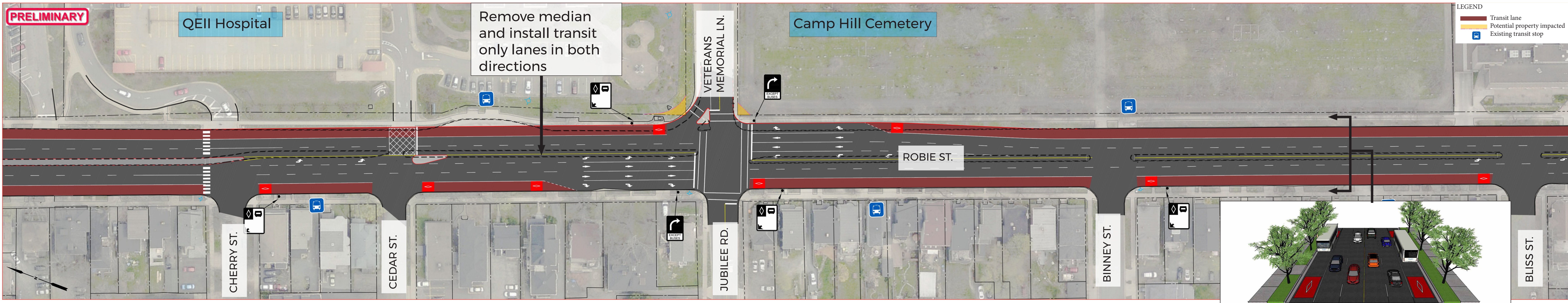
- Added delay at signalized intersections for all users.
- Loss of on-street parking along Robie Street.
- Road widening will impact adjacent Common property and trees.
- Restricts mid-block left turn movements. Turn restrictions could increase routing for local traffic.

# ROBIE STREET - CHERRY STREET TO BLISS STREET

Existing Cross Section



CURBSIDE BUS LANES



IMPACTS

Provides curbside transit lanes in both directions.	Longer pedestrian crossings of Robie at Jubilee Road. Loss of median refuge at Jubilee Road.	Loss of on-street parking.
Minimal impact to traffic.	Minor impact to properties at Jubilee intersection.	Road widening at Veteran's Memorial Lane will impact 5 medium trees.

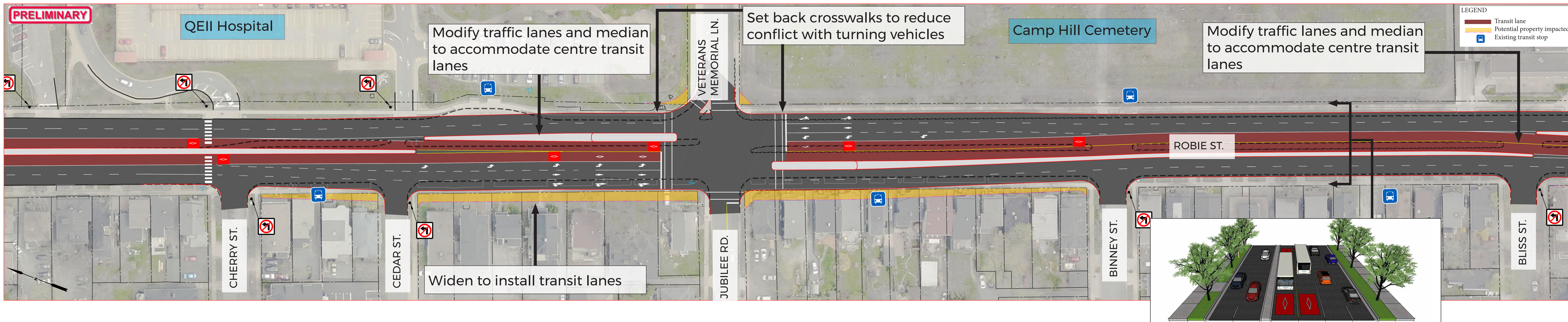
**PROS**

- Improves flow of transit vehicles in both directions.
- Minimal impact to traffic flow.

**CONS**

- Loss of parking along Robie Street.
- Loss of small trees with removal of the median.

CENTRE MEDIAN BUS LANES



IMPACTS

Provides centre median transit lanes in both directions.	Longer pedestrian crossings of Robie at Jubilee Road.	Loss of on-street parking.
Traffic signal phasing will increase intersection delay. Left turns to/from unsignalized side streets prohibited.	Widening will impact several properties along the corridor. Restricts left turn movements into existing QEII Hospital driveway.	Road widening will impact 18 large trees, 9 medium trees. Loss of small trees with the adjustment of the median.

**PROS**

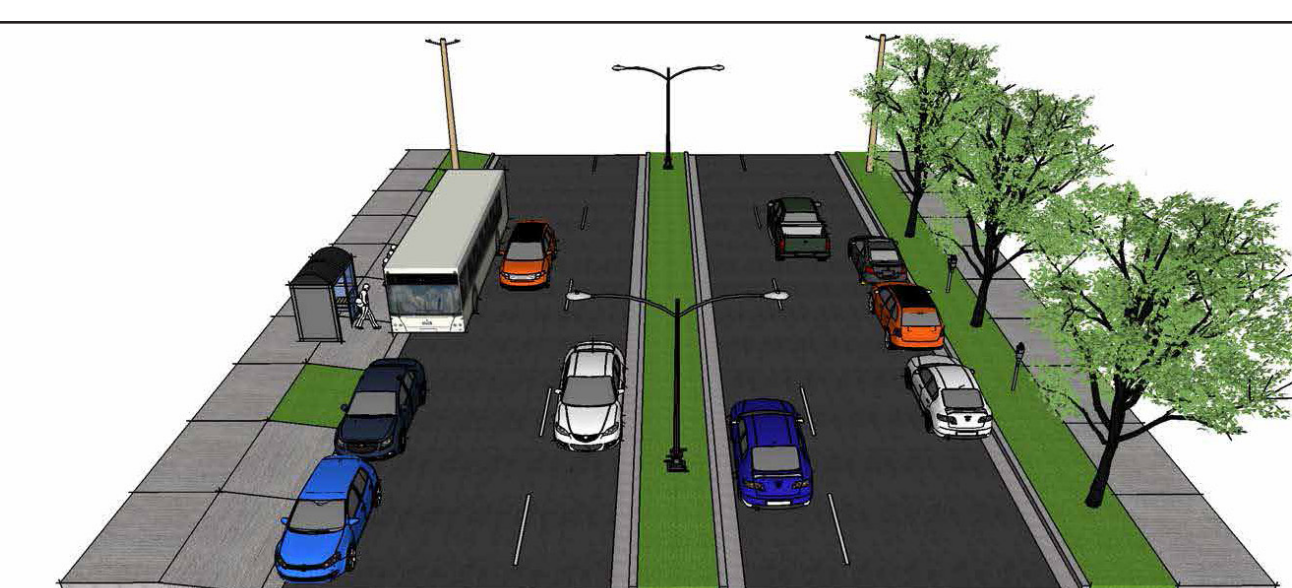
- Improves flow of transit vehicles in both directions.

**CONS**

- Added delay at signalized intersections for all users.
- Loss of on-street parking along Robie Street.
- Road widening will impact adjacent properties and trees.
- Restricts mid-block left turn movements. Turn restrictions could increase routing for local traffic.

# ROBIE STREET - BLISS STREET TO SOUTH STREET

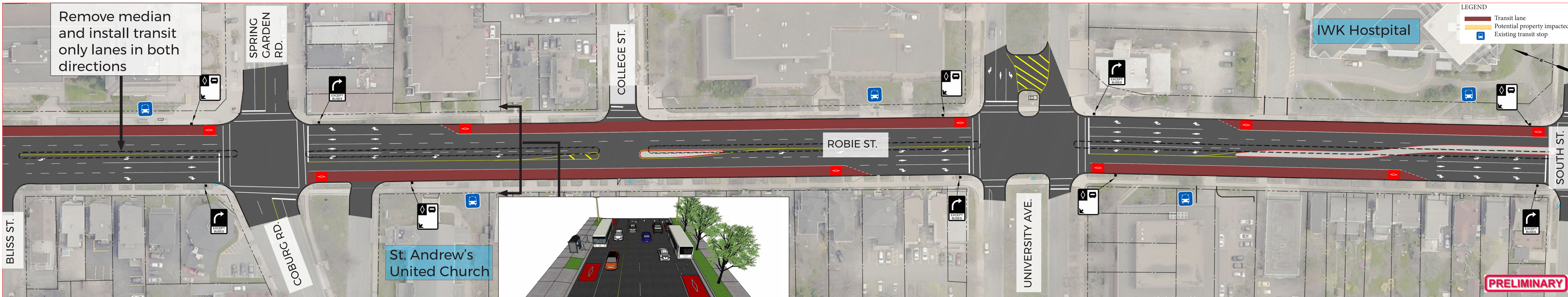
Existing Cross Section



Key Map - Robie Street



## CURBSIDE BUS LANES



### IMPACTS

Provides curbside transit lanes in both directions.	Loss of median refuge at Spring Garden Road	Loss of on-street parking
Minimal impact to traffic.	No major impact.	Loss of small trees with the removal of the median.

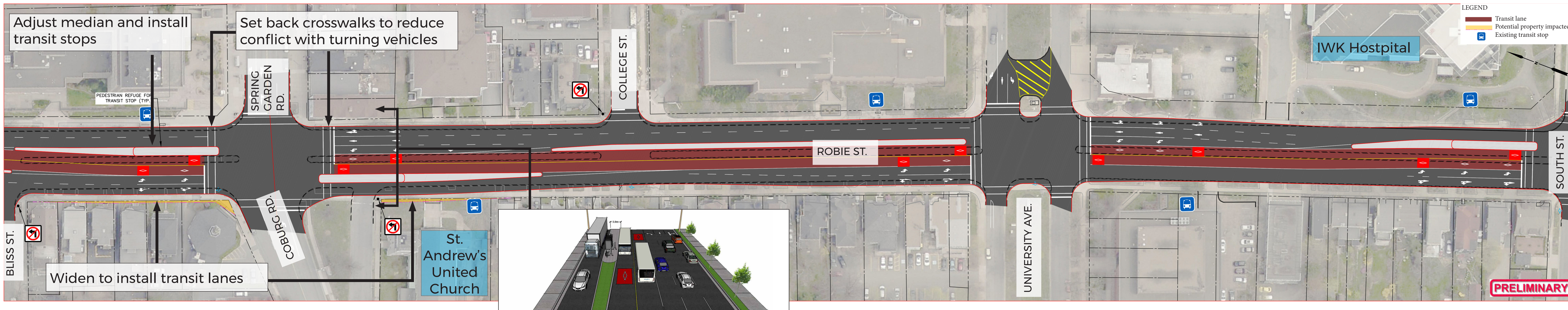
### PROS

- Improves flow of transit vehicles in both directions.
- Minimal impact to traffic flow.

### CONS

- Loss of parking along Robie Street.
- Loss of small trees with removal of the median.

## CENTRE MEDIAN BUS LANES



### IMPACTS

Provides centre median transit lanes in both directions.	Longer and setback pedestrian crossings at Spring Garden Road and South Street. Eliminates boulevard buffer between sidewalk and street.	Loss of on-street parking.
Traffic signal phasing will increase intersection delay. Left turns to/from unsignalized side streets prohibited.	Some impact near Coburg Road.	Road widening will impact 5 large trees, 4 medium trees. Loss of small trees with the removal of the median.

### PROS

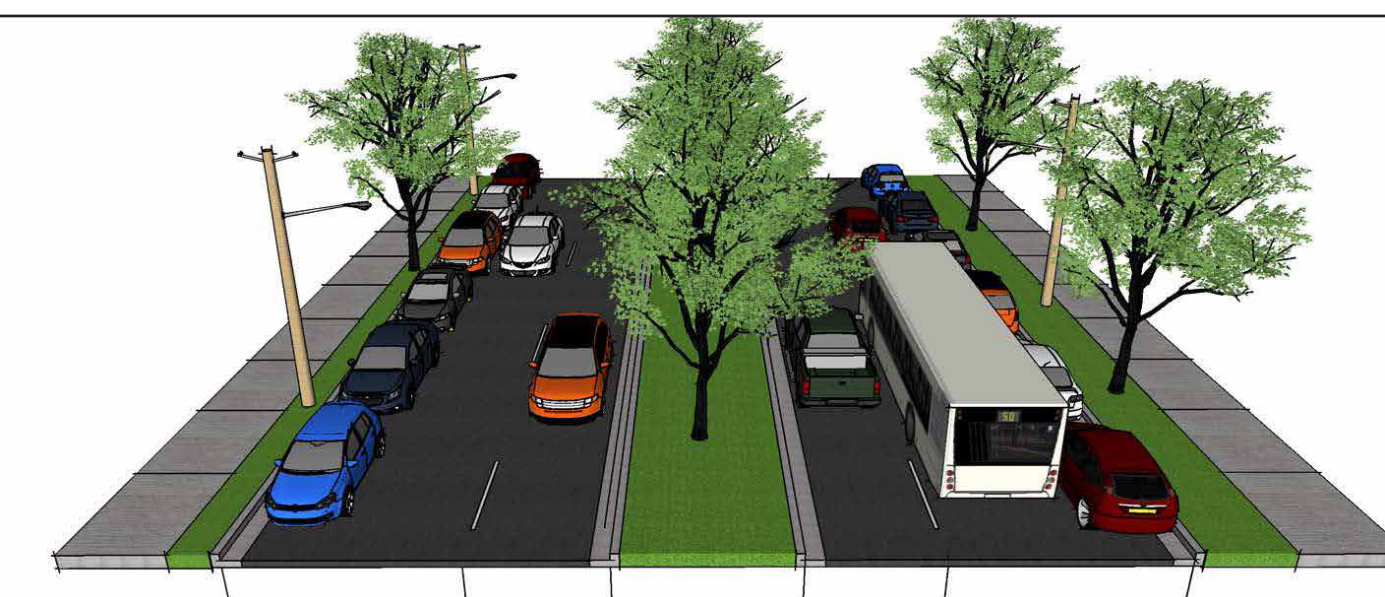
- Improves flow of transit vehicles in both directions.

### CONS

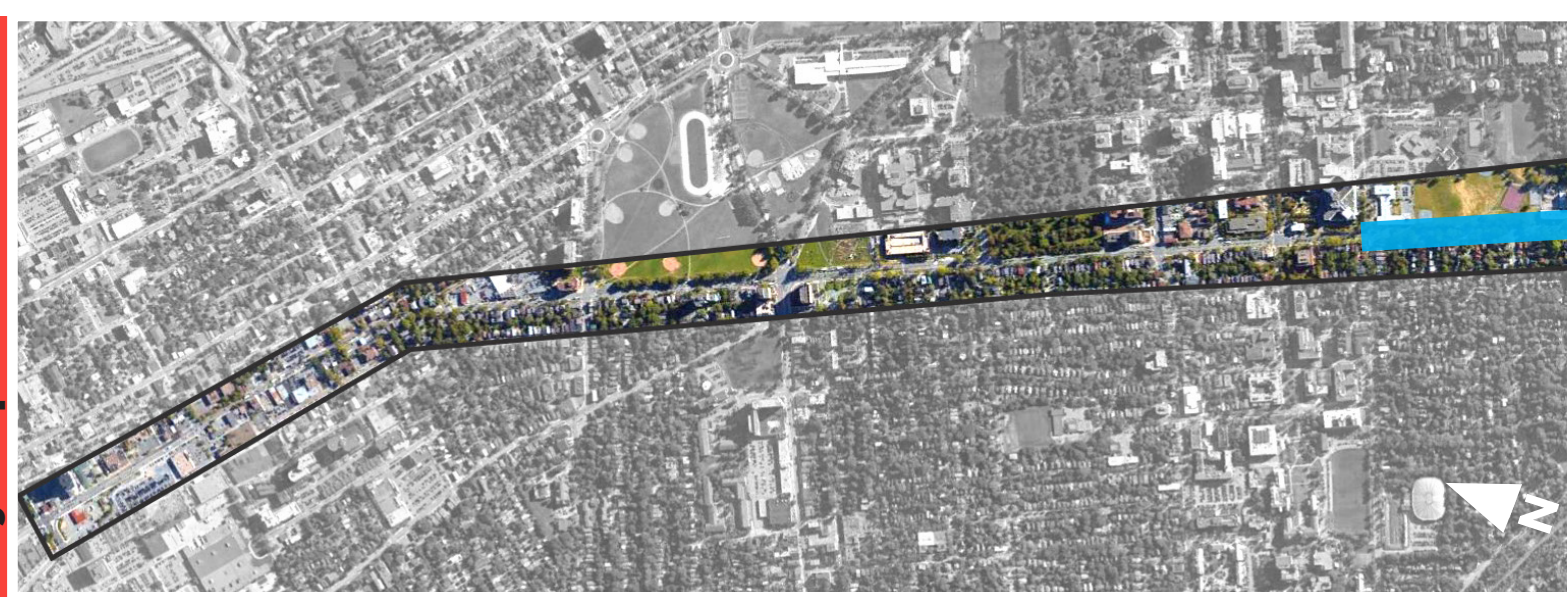
- Added delay at signalized intersections for all users.
- Loss of on-street parking along Robie Street.
- Road widening will impact adjacent trees.
- Restricts mid-block left turn movements. Turn restrictions could increase routing for local traffic.

# ROBIE STREET - SOUTH STREET TO INGLIS STREET

Existing Cross Section



Key Map - Robie Street



CURB SIDE TPM



IMPACTS

Provides curbside transit lanes in both directions.	No impact.	Loss of on-street parking.
Minimal impact to traffic.	No major impact.	Loss of two medium trees with the removal of the median section at South Street.

PROS

- Improves flow of transit vehicles in both directions.
- Minimal impact to traffic flow.

CONS

- Loss of parking along Robie Street.

CENTRE MEDIAN TPM



IMPACTS

Provides centre median transit lanes in both directions.	No impact.	Loss of on-street parking.
Traffic signal phasing will increase intersection delay. Left turns to/from unsignalized side streets prohibited.	Impact to property at South Street.	Loss of 4 medium trees with the removal of the median section at South Street.

PROS

- Improves flow of transit vehicles in both directions.

CONS

- Added delay at signalized intersections for all users.
- Loss of on-street parking along Robie Street.
- Restricts mid-block left turn movements. Turn restrictions could increase routing for local traffic.